

# LIBRARY SPACE SAFARI: STORYTELLING THROUGH UX DESIGN

## INTRODUCTION

Library spaces tell stories through their design, names, and the figures they honor, reflecting institutional values and shaping user perceptions.

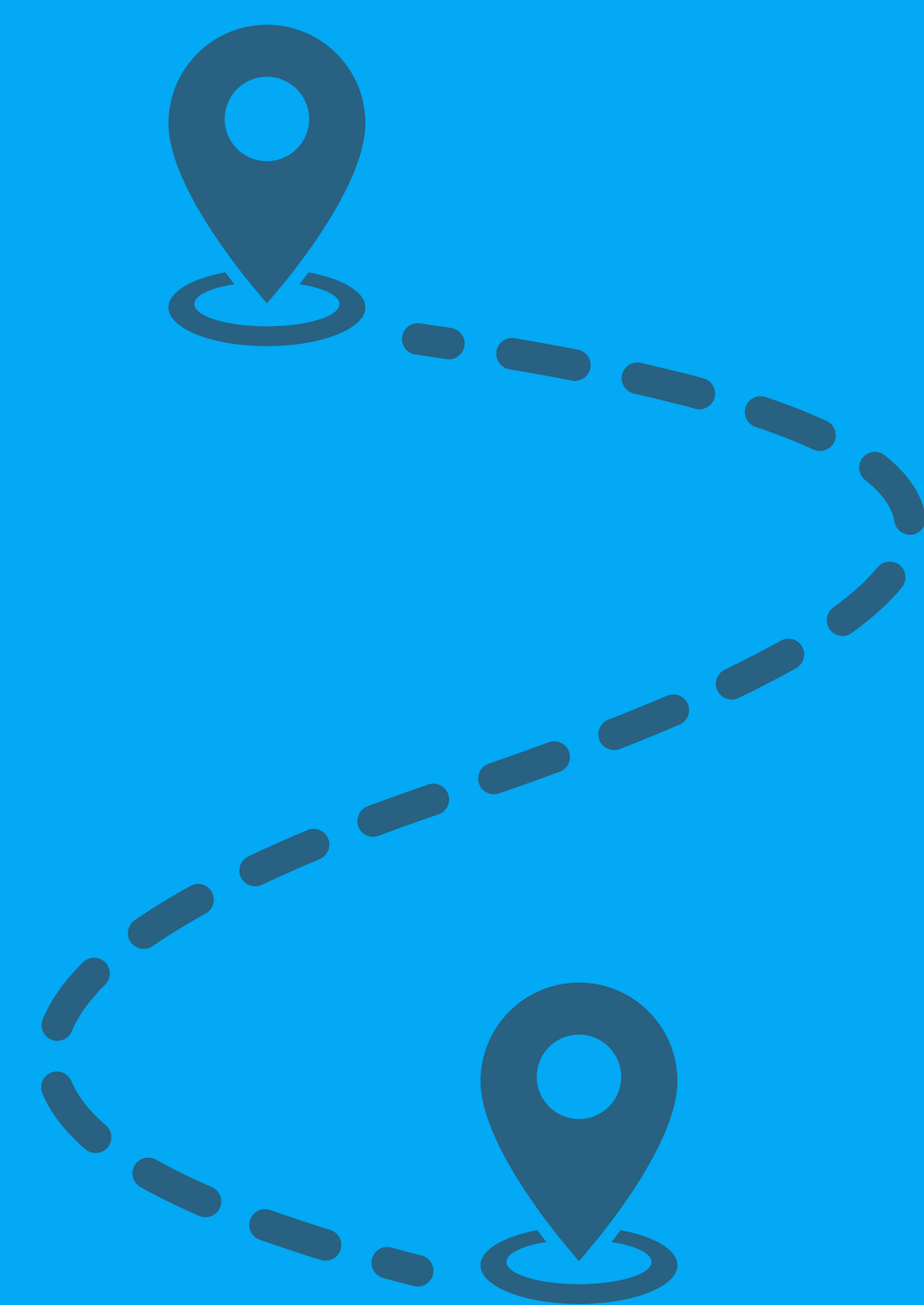
The Library Physical Space Safari, developed by the Instruction and User Experience Librarian at the University of Montevallo, evaluates **how libraries create inclusive environments and convey narratives through design**. This project aims to improve understanding of library design best practices and enhance the user experience at UM by examining how design elements, naming conventions, and layouts influence perceptions in an effort to inform improvements at Carmichael Library.

This research explores how library spaces communicate **inclusion, accessibility, and belonging**.



## SEVEN LIBRARIES IN ALABAMA HAVE BEEN EVALUATED:

- 3 public libraries
- 1 small private academic library
- 1 small public university library
- 1 large flagship university library
- 1 public HBCU library



### Author

Kayla Johnson, MLIS | Assistant Professor  
Instruction and User Experience Librarian  
kjohns37@montevallo.edu

### Collaborative Partners

Charlotte Ford, Carmichael Library Director  
Kara Anderson, LIS Student Intern



UNIVERSITY of MONTEVALLO  
CARMICHAEL LIBRARY



## METHODOLOGY

Using a **qualitative framework**, this research utilizes an **ethnographic approach** combined with the **service safari user experience (UX) technique** to explore **how physical library environments impact the user experience and communicate narratives** as cultural spaces that reflect institutional values.

SCAN  
HERE!

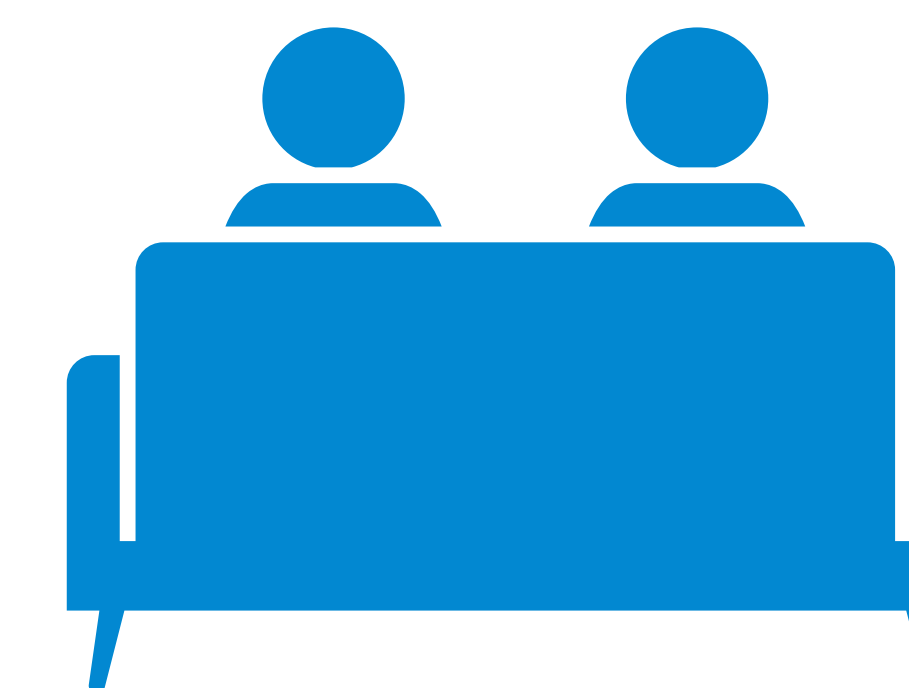


View the  
research  
workbook



## APPLICATIONS TO CARMICHAEL LIBRARY

- Insights from this study will guide recommendations for improving the user experience at Carmichael Library, with a focus on enhancing inclusivity and storytelling through design choices. The research will influence purchasing decisions for furniture and other components as part of the renovation of our ground floor.
- This study highlights actionable ways to enhance user experience, accessibility, and inclusivity in our physical spaces and will help inform the design choices for our new group study room.



## BROADER APPLICATIONS

This research extends **beyond UM**, providing practical recommendations for designing libraries that reflect diverse populations and enhance user experience. It lays the groundwork for **ongoing research** into adapting library environments to better serve users, with a focus on **inclusivity and accessibility** in future design efforts.

